

# Bali Wake up

Land tour guaranteed departure daily with minimum of **1 person**

## Itinerary for 7 nights

**Day1 Arrive in Bali International airport**  
 XXX Meet and greeted by English speaking guide  
 Transfer to hotel and free at leisure  
 Your choice of hotel accommodation in Bali

**Day2 Full day sightseeing in Bali**  
 BXX Hotel accommodation

**Day3 Full day sightseeing in Bali**  
 BXX Hotel accommodation

**Day4 Half day tour in Bali**  
 BXX Hotel accommodation

**Day5-7 Bali - free day**  
 BXX Hotel accommodation

**Day8 Bali - Departure**  
 BXX Transfer to airport for homeward bound.

## Itinerary for 6 nights

**Day1 Arrive in Bali International airport**  
 XXX Meet and greeted by English speaking guide  
 Transfer to hotel and free at leisure  
 3 choices of hotel accommodation starting in November01

**Day2 Full day sightseeing in Bali**  
 BXX Hotel accommodation

**Day3 Full day sightseeing in Bali**  
 BXX Hotel accommodation

**Day4 Half day tour in Bali**  
 BXX Hotel accommodation

**Day5-6 Bali - free day**  
 BXX Hotel accommodation

**Day7 Bali - departure.**  
 BXX Hotel accommodation

Land Tour price in US\$ per person. Validity: July01 - December24, 2011.

Star	Hotel Name	Location	Twin or Triple share 7 night pp	Single room extra	Special offer Twn/Trp in 6 night pp	Single room extra	Add night with BFT	High Season	Fee add on
3	Bumas Hotel Sanur	Sanur	249	211			20	7/15-8/31	15
3	Aston Grand Kuta	Kuta	275	236			25	7/01-9/30	20
3	Sativa Sanur Cottage	Sanur	285	236			55	7/15-8/31	25
4+	Inna Grand Bali Beach	Kuta	310	275			69	7/01-8/31	25
4+	Aston Bali Resort & Spa	Benoa	385	349			93	7/01-8/31	25
4+	The Oasis [ new hotel ]	Sanur	399	336			106	8/01-10/15	20
4+	Sanur Beach Hotel	Sanur	435	375			100	8/01-9/30	25
4+	Grand Mirage Bali Resort	Benoa	410	349	Nov01-Dec22		100	7/15-9/20	25
4+	Mercure Resort Sanur	Sanur	499	449	360	336	115	7/15-9/15	30
4+	Novotel Benoa	Benoa	499	460	349	311	125	7/15-9/15	40
5+	Sofitel The Royal Beach Seminyak	Nusa Dua	685	636	549	636	181	7/01-9/30	40
5+	Nusa Dua Beach Hotel	Nusa Dua	685	625			181	7/15-9/15	30
5+	Intercontinental Bali Resort	Nusa Dua	848	798			225	7/15-9/15	50
5+	Grand Hyatt Bali	Nusa Dua	848	798			225	7/15-9/15	40
5+	Westin Hotel & Resort	Nusa Dua	848	798			225	7/15-9/15	40

Child age 12 years and above pays full twin share price.  
 Child age under 12 years pays 75% of twin share price.

### Price inclusive

- 6 or 7 nights hotel accommodation at your choice
- Round trip airport to hotel transfer
- Daily hotel breakfast
- 2 full day sightseeing tours + 1 half day sightseeing tour included
- English speaking guide meeting on arrival with welcome sign
- All local tax inclusive.

### Price does not include

- Indonesia visa fee. On arrival visa US\$25 for 30 days
- Local guide and driver gratuities
- Own personal expenses
- Expenses not indicate in itinerary
- Your own ticket. Ask for lowest air fare for Bali.

### Payment

- Payment is required fully pay within 30 days prior to arrival in Bali.
- Holding spaces will auto release if payment is not paid in full.

### Cancellation Fee

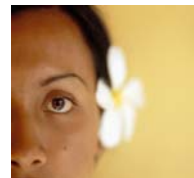
- Charge 50% of tour price within 15 -29 days to arrival
- Charge 75% of tour price within 7 -14 days prior arrival
- Charge 100% of tour price within 06 days to arrival.
- No refund is made for unused tour or hotel after arrival.

### You will select and sign up 2.5 day sightseeing from 5 tours below

1. Full day Beauty of Kintamani and Bali Bird Park. 8 hours
2. Full day The Eastern Bali Mystic. 9 hours
3. Full day Northern Bali Magic. 9 hours
4. Sunset Bali tour. 5 hours
5. Oleh Oleh shopping & Kecak dance. 5 hours

### Bonus

1 bottle of wine, or  
 90 minutes massage or Spa



巴厘島八天超值逍逸遊